



Star TSP100 printer driver installation & configuration guide.



This manual will help guide you through the installation and configuration of the ePay Charge Star TSP100 printer driver. Please refer to the printer user guide for the driver software installation and proper printer connection.

*NOTE: ePay Charge software will work **ONLY** with Star printer driver version 3.0 or greater.*

INSTALLATION REQUIREMENTS

- * Star Micronics TSP100 thermal USB printer.
- * USAePay Retail ePay Charge software.
- * Star Micronics Printer Driver v3.0 or greater.
- * PC or MAC compatible computer.
- * Microsoft Windows, MAC, Linux or Unix operating systems.
- * Available USB port (Required for printer to computer connection.)
- * Keyboard and Mouse.
- * High Speed Internet Connection (Dial-Up **NOT** recommended.)

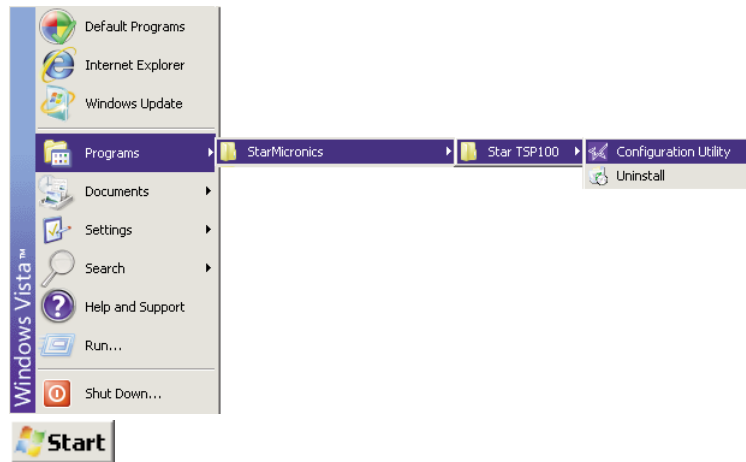
ADMINISTRATOR SETTING (WINDOWS VISTA ONLY)

Before running the Star Micronics Configuration Utility, you must first set the Configuration Utility privilege level to Administrator.

Step 1.

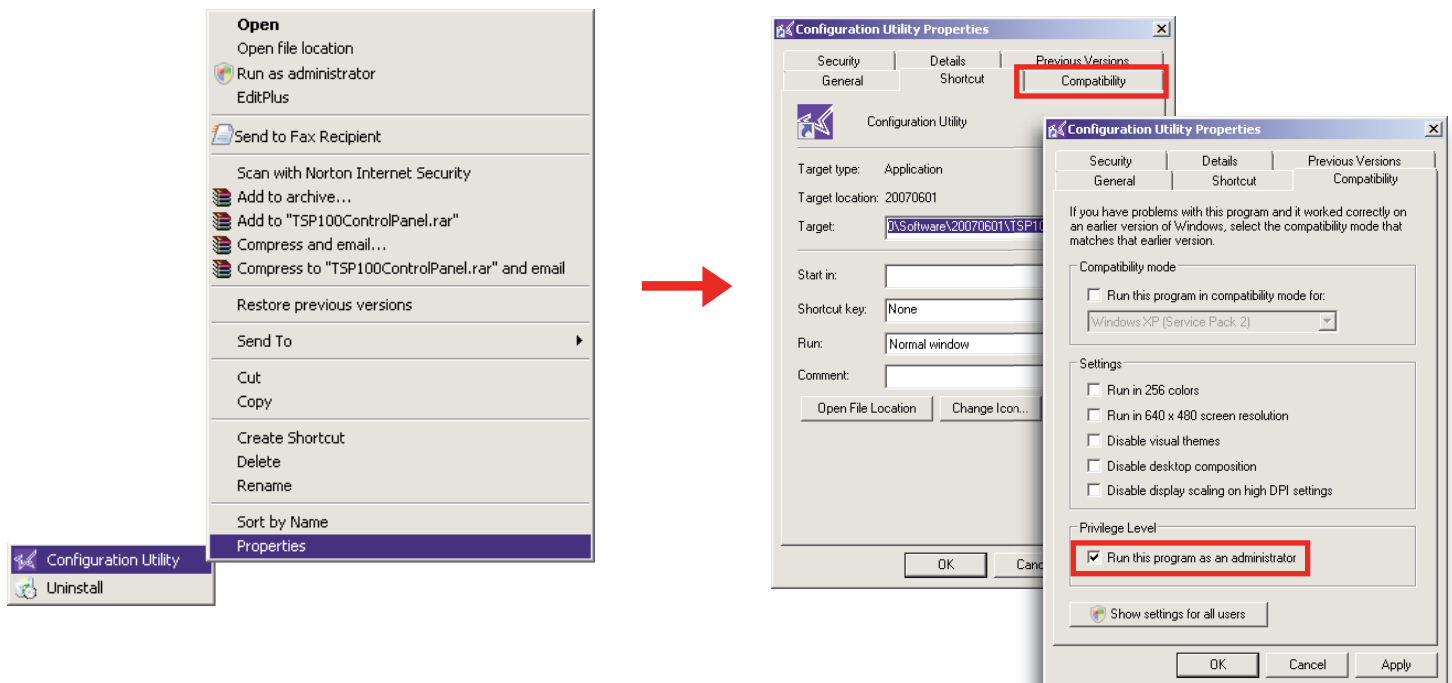
Select "**Start -> Programs -> StarMicronics -> Star TSP100 -> Configuration Utility**".

NOTE: DO NOT left click on "Configuration Utility"



Step 2.

RIGHT CLICK on "Configuration Utility" and then select "**Properties -> Compatibility**". Click the "**Run the program as administrator**" check box and select "**Save**"



CONFIGURING STAR TSP100 PRINTER DRIVERS

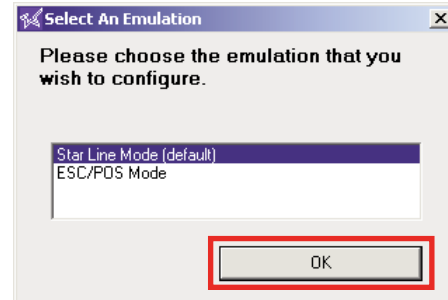
Step 1.

Turn on the Star printer and start the Star Micronics "Configuration Utility" application.

Step 2.

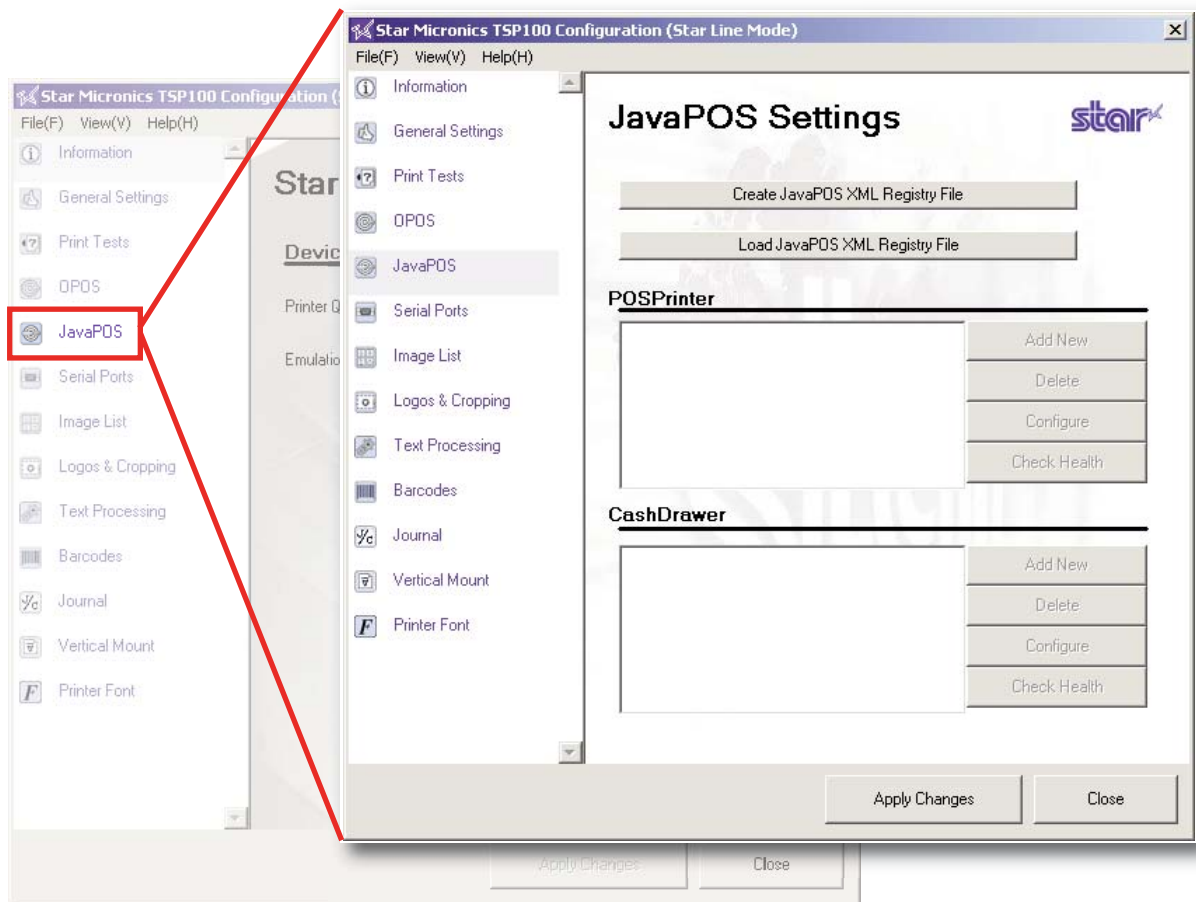
Select "**Star Line Mode (Default)**," then click "**OK.**"

NOTE: It may take up to 30 seconds to start the utility.



Step 3.

Select "**JavaPOS**" from the left hand menu.



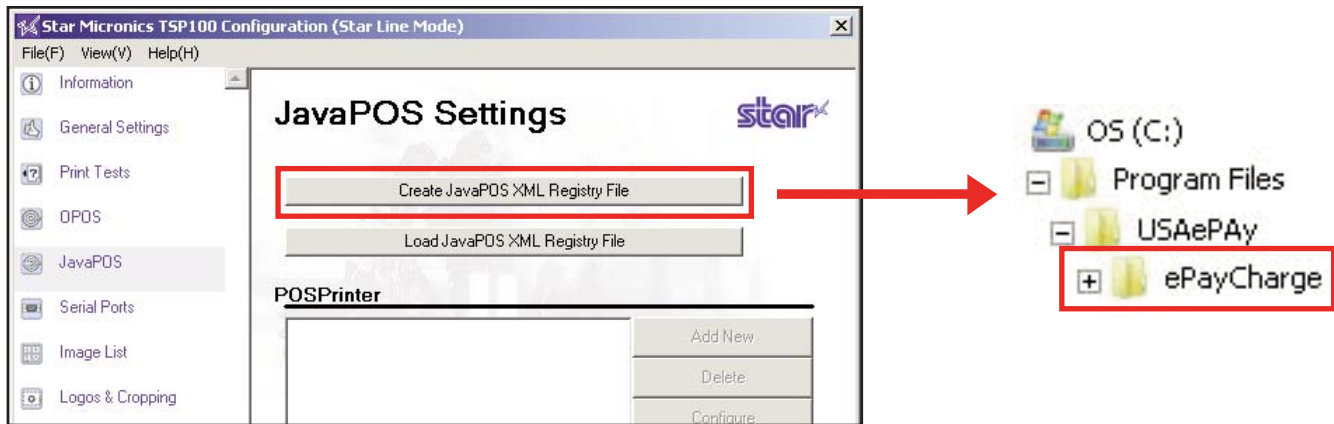
CONFIGURING STAR TSP100 PRINTER DRIVERS

Step 4.

Click "**Create JavaPOS XML Registry File**" button and save the default "jpos.xml" file to:

"**C:\Program Files\USAePay\ePayCharge**" directory.

*NOTE: The jpos.xml file **MUST** be saved to the ePayCharge root directory.*



Step 5.

Click the "**Add New**" button. You should see "Star TSP100 Cutter (TSP143)" as a default device. Click "**OK**"

NOTE: If the "Add New" button is not enabled, refer back to step 4.

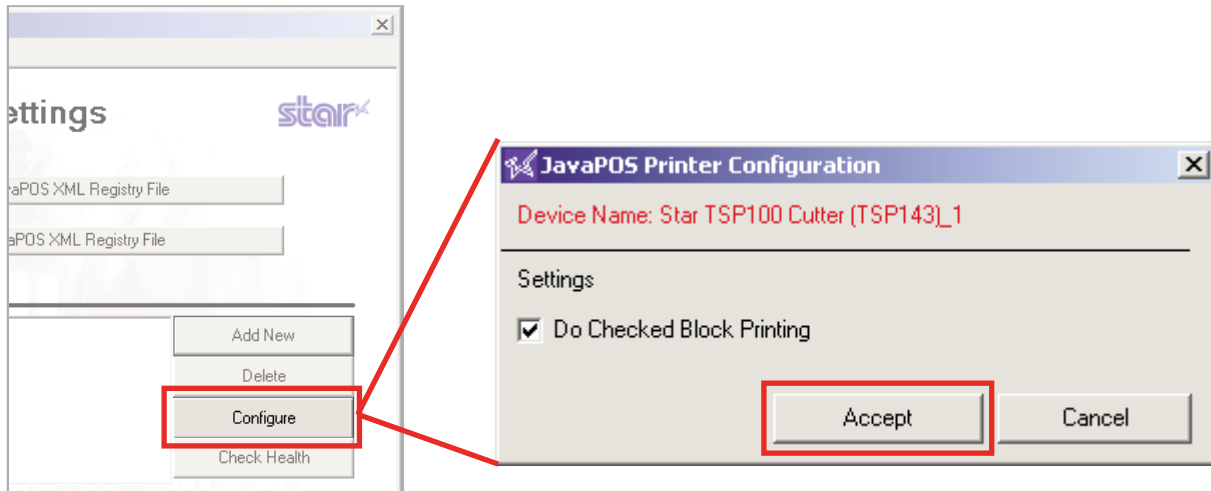


CONFIGURING STAR TSP100 PRINTER DRIVERS

Step 6.

Click the **"Configure"** button. Make sure "Do Checked Block Printing" is checked and click **"Accept."**

NOTE: If the "Configure" button is not enabled, refer back to step 4.

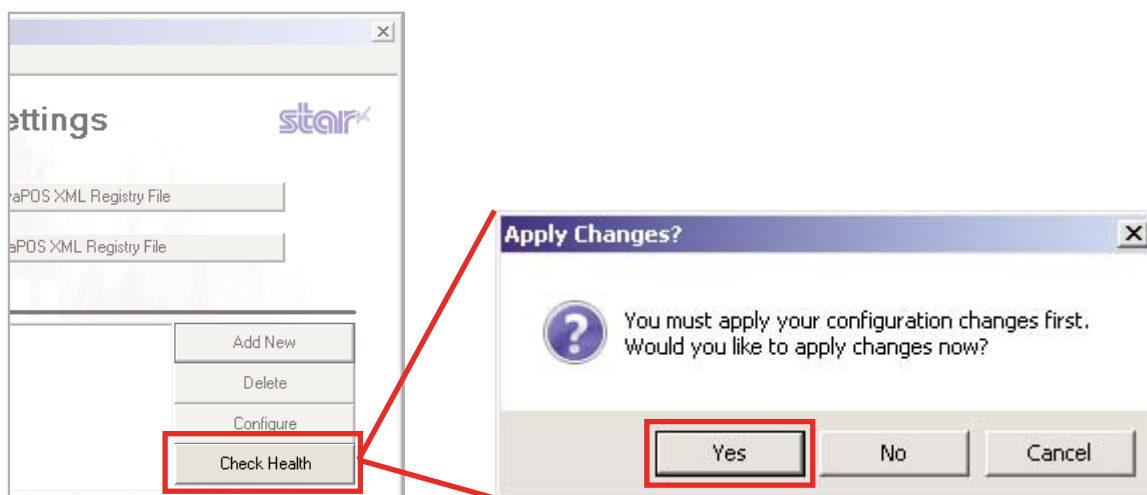


Step 7.

Click the **"Check Health"** button.

You will be required to save the configuration settings. Click **"Yes"** in the "Apply Changes" window.

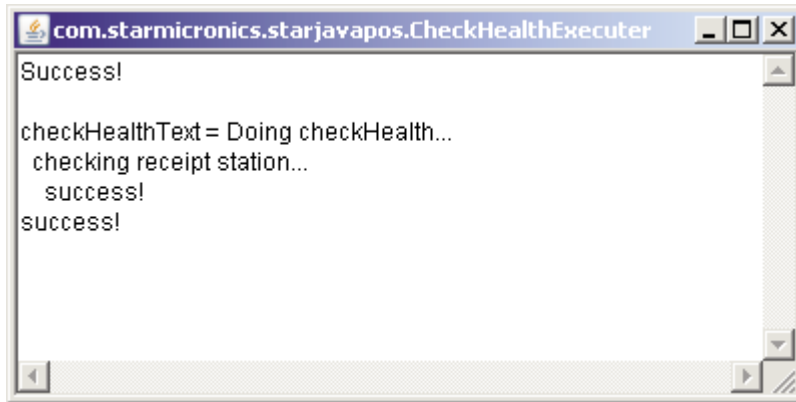
NOTE: If the "Configure" button is not enabled, refer back to step 4.



CONFIGURING STAR TSP100 PRINTER DRIVERS

Step 8.

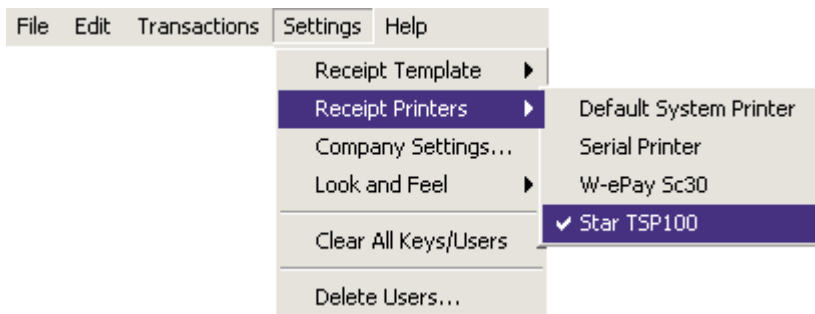
Once the setup is successful, a "Check Health" receipt will be printed from the TSP printer.



CONFIGURING EPAY CHARGE FOR STAR TSP100 PRINTER

Step 9.

Start the ePay Charge software and go to **Settings -> Receipt Printers**. Select "**Stra TSP100**" printer.





If you do not already own a Star Micronics TSP100 thermal printer, contact your merchant service provider for more information.